

NOT OK

あいみょん

Standard tuning

♩ = 105

Capo. fret 1

Intro

G

G

Em

s.guit.

Am

D

D

6 7 8 9

A

G

D

Bm7

Em

10 11 12 13

Am

Bm7

Am

D7

14 15 16 17

A'

G

D

Bm7

Em

18 19 20 21

A

Am Bm7 Am D7 G

22 23 24 25

B

C D Bm7 Em Am D

26 27 28 29 30 31 32 33 34

Bm7 Em C D B7 Em C D D

29 30 31 32 33 34

C

G Em

35 36 37 38

C D

39 40 41 42

G Em

43 44 45 46

C **D** **G**

47 48 49 50

A'

G **D** **Bm7** **Em**

51 52 53 54

Am **Bm7** **Am** **D7** **G**

55 56 57 58

B

C **D** **Bm7** **Em** **Am** **D** **Bm7** **Em**

59 60 61 62

C **D** **B7** **Em** **C** **D**

63 64 65 66 67

C

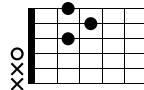
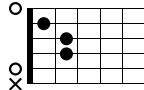
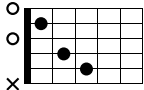
G **Em**

68 69 70 71

C

Am

D



97 98 99 100 101

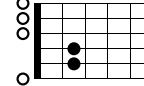
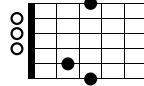
TAB

Measures 97-101: A sequence of guitar TAB notation. Measure 97 starts with a C chord (0, 2, 3, 0, 2, 3) and continues with a descending eighth-note scale: 2, 1, 0, 2, 1, 0, 2, 1, 0, 2, 1, 0. Measure 98 starts with an Am chord (0, 2, 3, 0, 2, 0) and continues with a descending eighth-note scale: 2, 1, 0, 2, 1, 0, 2, 1, 0, 2, 1, 0. Measure 99 starts with a D chord (0, 2, 3, 2, 3, 0) and continues with a descending eighth-note scale: 2, 1, 0, 2, 1, 0, 2, 1, 0, 2, 1, 0. Measure 100 starts with a D chord (0, 2, 3, 2, 3, 0) and continues with a descending eighth-note scale: 2, 1, 0, 2, 1, 0, 2, 1, 0, 2, 1, 0. Measure 101 starts with a D chord (0, 2, 3, 2, 3, 0) and continues with a descending eighth-note scale: 2, 1, 0, 2, 1, 0, 2, 1, 0, 2, 1, 0.

C

G

Em



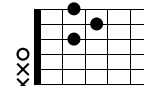
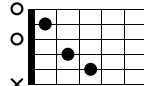
102 103 104 105

TAB

Measures 102-105: A sequence of guitar TAB notation. Measure 102 starts with a G chord (0, 0, 0, 2, 3, 3) and continues with a descending eighth-note scale: 3, 2, 1, 0, 2, 1, 0, 2, 1, 0, 2, 1, 0. Measure 103 starts with a G chord (0, 0, 0, 2, 3, 3) and continues with a descending eighth-note scale: 3, 2, 1, 0, 2, 1, 0, 2, 1, 0, 2, 1, 0. Measure 104 starts with an Em chord (0, 0, 0, 2, 2, 0) and continues with a descending eighth-note scale: 2, 1, 0, 2, 1, 0, 2, 1, 0, 2, 1, 0, 2, 1, 0. Measure 105 starts with an Em chord (0, 0, 0, 2, 2, 0) and continues with a descending eighth-note scale: 2, 1, 0, 2, 1, 0, 2, 1, 0, 2, 1, 0, 2, 1, 0.

C

D



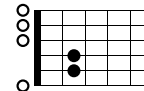
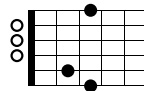
106 107 108 109

TAB

Measures 106-109: A sequence of guitar TAB notation. Measure 106 starts with a C chord (0, 2, 3, 0, 2, 3) and continues with a descending eighth-note scale: 2, 1, 0, 2, 1, 0, 2, 1, 0, 2, 1, 0, 2, 1, 0. Measure 107 starts with a C chord (0, 2, 3, 0, 2, 3) and continues with a descending eighth-note scale: 2, 1, 0, 2, 1, 0, 2, 1, 0, 2, 1, 0, 2, 1, 0. Measure 108 starts with a D chord (0, 2, 3, 2, 3, 0) and continues with a descending eighth-note scale: 2, 1, 0, 2, 1, 0, 2, 1, 0, 2, 1, 0, 2, 1, 0. Measure 109 starts with a D chord (0, 2, 3, 2, 3, 0) and continues with a descending eighth-note scale: 2, 1, 0, 2, 1, 0, 2, 1, 0, 2, 1, 0, 2, 1, 0.

G

Em



110 111 112 113

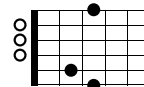
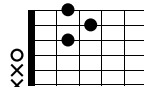
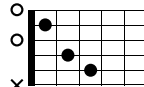
TAB

Measures 110-113: A sequence of guitar TAB notation. Measure 110 starts with a G chord (0, 0, 0, 2, 3, 3) and continues with a descending eighth-note scale: 3, 2, 1, 0, 2, 1, 0, 2, 1, 0, 2, 1, 0, 2, 1, 0. Measure 111 starts with a G chord (0, 0, 0, 2, 3, 3) and continues with a descending eighth-note scale: 3, 2, 1, 0, 2, 1, 0, 2, 1, 0, 2, 1, 0, 2, 1, 0. Measure 112 starts with an Em chord (0, 0, 0, 2, 2, 0) and continues with a descending eighth-note scale: 2, 1, 0, 2, 1, 0, 2, 1, 0, 2, 1, 0, 2, 1, 0, 2, 1, 0. Measure 113 starts with an Em chord (0, 0, 0, 2, 2, 0) and continues with a descending eighth-note scale: 2, 1, 0, 2, 1, 0, 2, 1, 0, 2, 1, 0, 2, 1, 0, 2, 1, 0.

C

D

G



114 115 116 117

TAB

Measures 114-117: A sequence of guitar TAB notation. Measure 114 starts with a C chord (0, 2, 3, 0, 2, 3) and continues with a descending eighth-note scale: 2, 1, 0, 2, 1, 0, 2, 1, 0, 2, 1, 0, 2, 1, 0, 2, 1, 0. Measure 115 starts with a D chord (0, 2, 3, 2, 3, 0) and continues with a descending eighth-note scale: 2, 1, 0, 2, 1, 0, 2, 1, 0, 2, 1, 0, 2, 1, 0, 2, 1, 0. Measure 116 starts with a G chord (0, 0, 0, 2, 3, 3) and continues with a descending eighth-note scale: 3, 2, 1, 0, 2, 1, 0, 2, 1, 0, 2, 1, 0, 2, 1, 0, 2, 1, 0. Measure 117 starts with a G chord (0, 0, 0, 2, 3, 3) and continues with a descending eighth-note scale: 3, 2, 1, 0, 2, 1, 0, 2, 1, 0, 2, 1, 0, 2, 1, 0, 2, 1, 0.

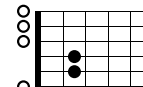
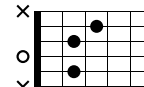
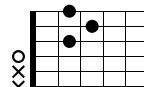
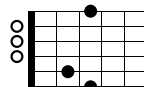
A'

G

D

Bm7

Em



118 119 120 121

TAB

Measures 118-121: A sequence of guitar TAB notation. Measure 118 starts with a G chord (0, 0, 0, 2, 3, 3) and continues with a descending eighth-note scale: 3, 2, 1, 0, 2, 1, 0, 2, 1, 0, 2, 1, 0, 2, 1, 0, 2, 1, 0. Measure 119 starts with a D chord (0, 2, 3, 2, 3, 0) and continues with a descending eighth-note scale: 2, 1, 0, 2, 1, 0, 2, 1, 0, 2, 1, 0, 2, 1, 0, 2, 1, 0. Measure 120 starts with a Bm7 chord (0, 2, 3, 2, 3, 0) and continues with a descending eighth-note scale: 2, 1, 0, 2, 1, 0, 2, 1, 0, 2, 1, 0, 2, 1, 0, 2, 1, 0. Measure 121 starts with an Em chord (0, 0, 0, 2, 2, 0) and continues with a descending eighth-note scale: 2, 1, 0, 2, 1, 0, 2, 1, 0, 2, 1, 0, 2, 1, 0, 2, 1, 0.

